



IMPERIAL
— GREENS —

Igniting a Legacy of
GREENSCAPE LAND

The background of the entire image is a detailed illustration of a lush tropical landscape. In the foreground, there are various tropical plants and flowers, including large green leaves and pinkish-orange blossoms. In the middle ground, a small bird with blue and red plumage is perched on a pink flower. In the background, there are rolling green hills and mountains under a soft, hazy sky. The overall style is artistic and serene.

The Craftsman of GREEN FUTURES

VIBS INFRABUILD LLP is a distinguished Real Estate Initiative by Sterile India Pvt. Ltd., a name synonymous with Trust in the Pharmaceutical Industry. With a vision to create Health-First Spaces amidst rapidly evolving urban landscapes, we are redefining modern living through cleaner and greener lifestyles.

Our Commitment to Excellence comes to life with our Flagship Development,
IMPERIAL GREENS



Orchestrating an Imperial Mission

With Meticulous Planning and Contemporary Vision, we shape Premium Spaces in Sought-After Locations thus Nurturing Sustainable Communities around Evolving Needs.

The Four Vs of **VIBS INFRABUILD**

- ◆ **Validated Track-Record**
Proven expertise backed by the success of Sterial India Pvt. Ltd.
- ◆ **Valuable Advantage**
Prime Locations that offer Strategic Benefits and Easy Access
- ◆ **Valued Voices**
We Listen, we Adapt and we Deliver with the Customer Always in Focus
- ◆ **Visionary Ventures**
Crafting Future-Ready Spaces with a Deep Commitment to Sustainability



Preview to a **GRAND VIEW**—◆◆

Imperial Greens on NH-1 Highway is an OC Certified 30 Acres of Residential Plots ranging from 180–350 Sq. Yds. cradled by Kundli's First-ever 8 Acres of Verdant Greens and over 5000 Trees, where the rustle of leaves, the scent of blossoms and dappled sunlight turn daily life into a symphony of nature-infused luxury.



Resort like LIFESTYLE

Where Affluence Cradles a Sense of Belonging

To reside here is to be gently persuaded that life can be both
Healthy and Splendid with Pristine AQL Zone and Add-on
Luxuries entwined in perfect harmony.





Luxuries that SIMPLIFY LIFE



Secure & Gated Community

Open Gym

Kids Play Area

Sewage Treatment Plant

Underground Tank

Electric Substation





Rainwater Harvesting System

CCTV Security

18m & 12m Wide Roads

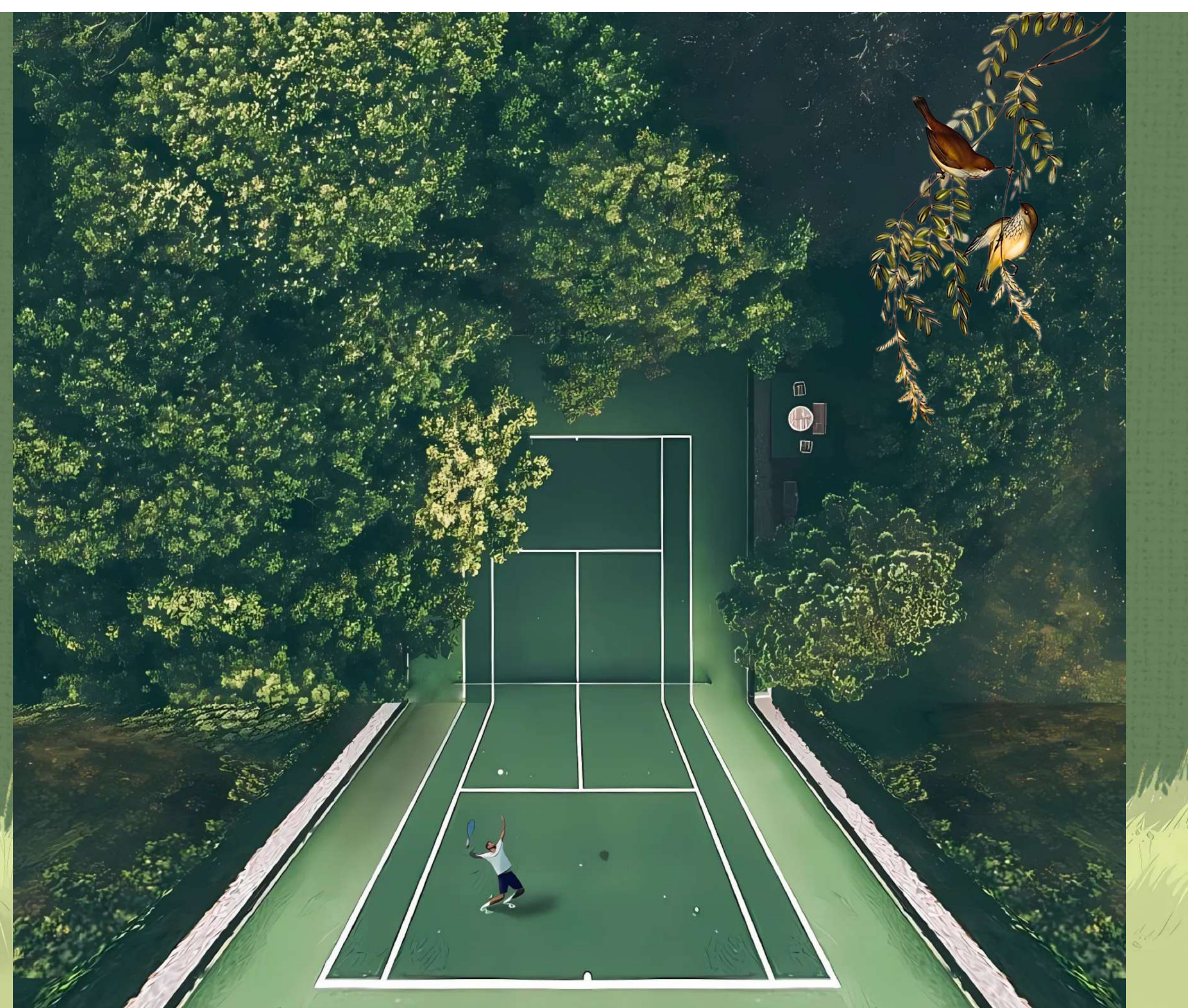
24*7 Ambulance Service

Badminton Court

Tennis Court

Skating Ground

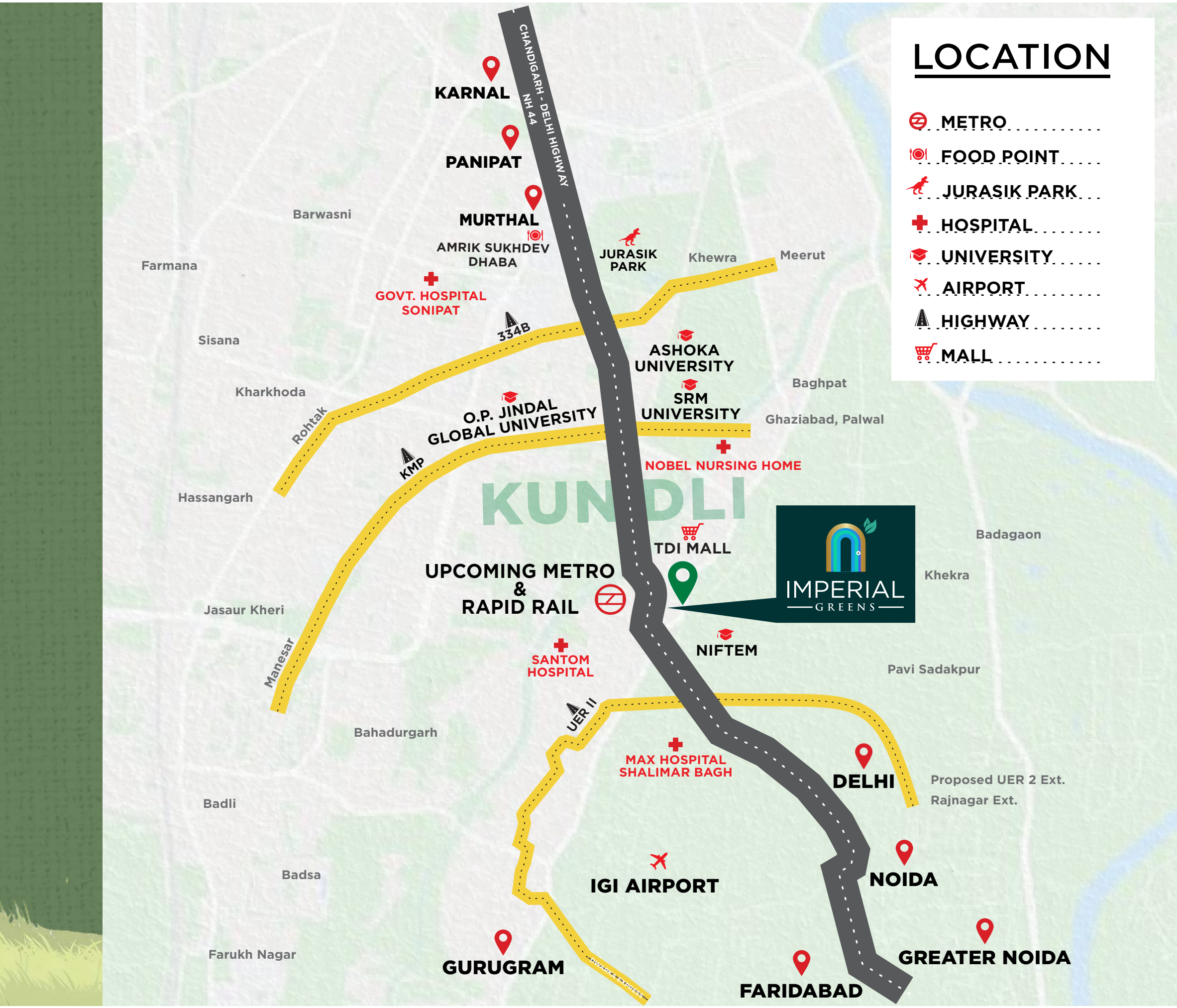
Basketball Court





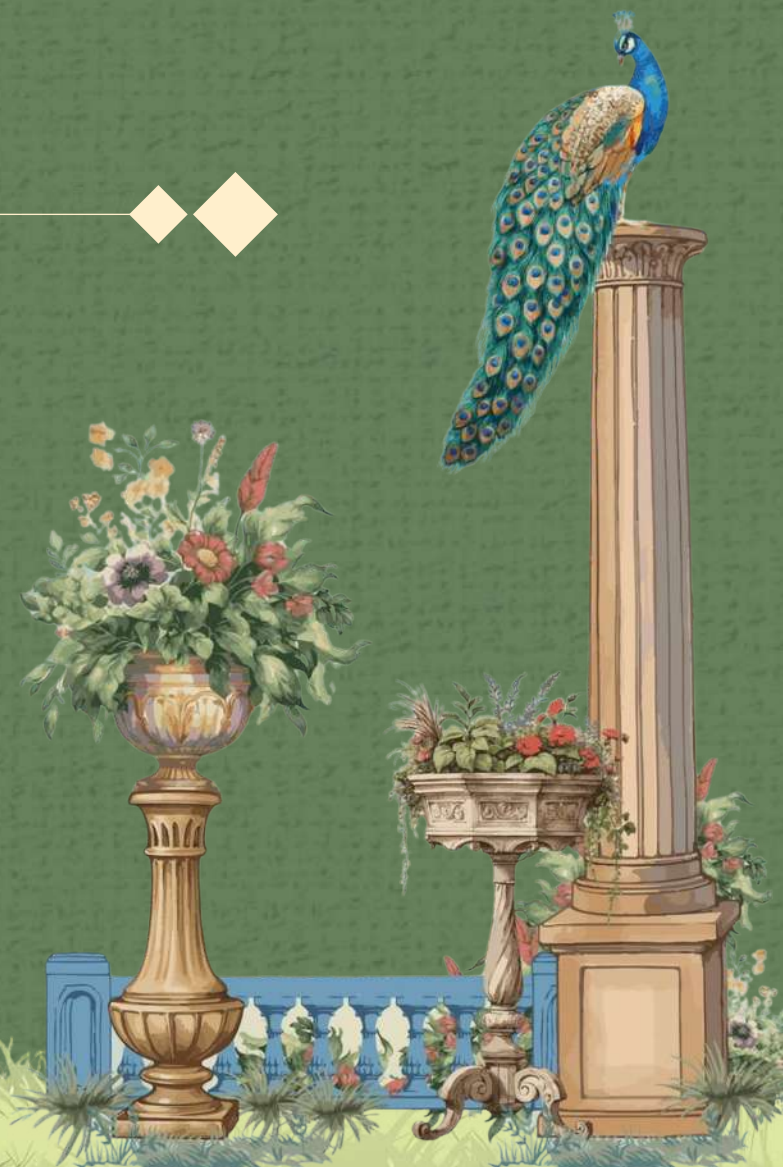
An Impression of the Masterplan that is poised to Transcend Blueprint into Timeless Grandeur

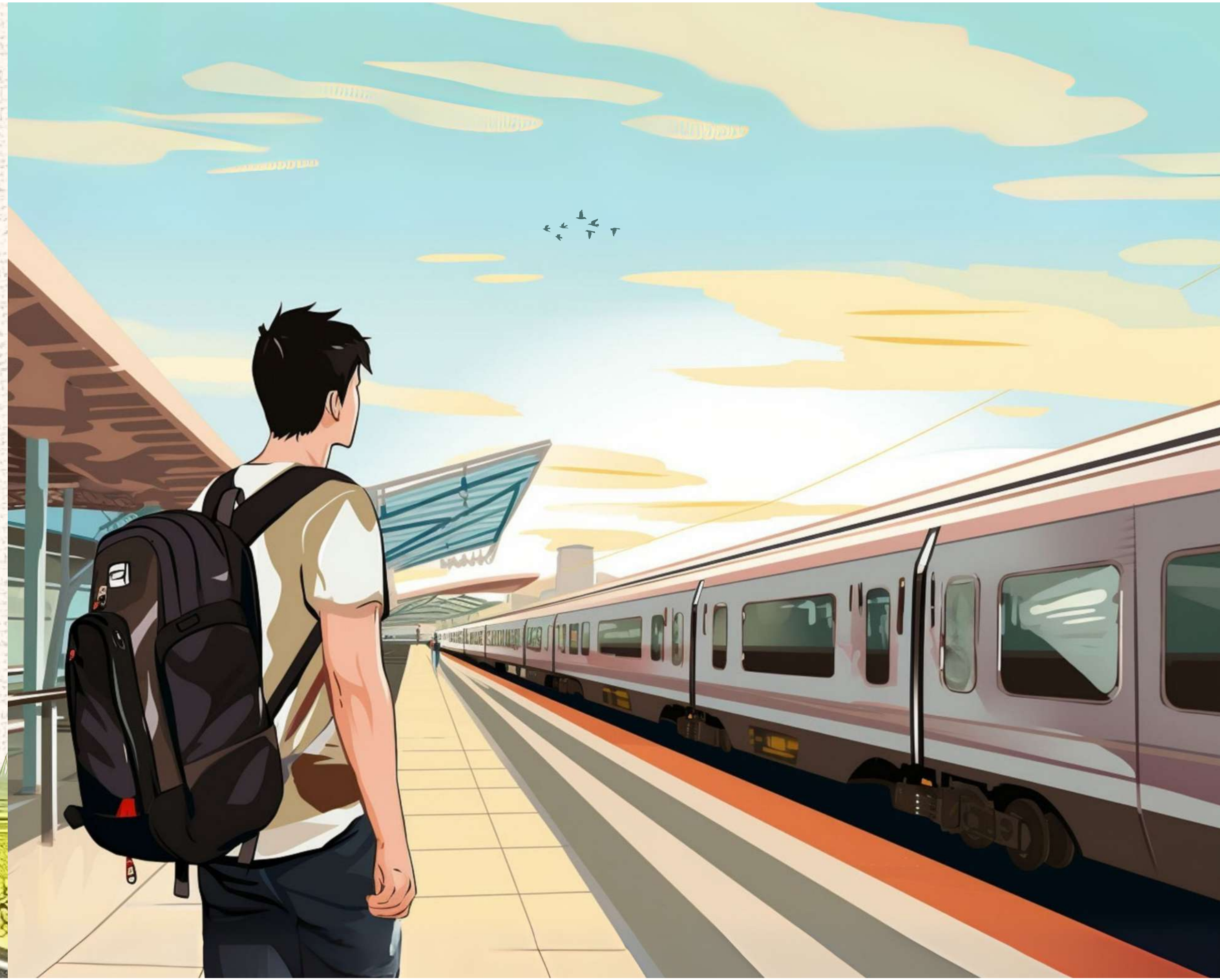
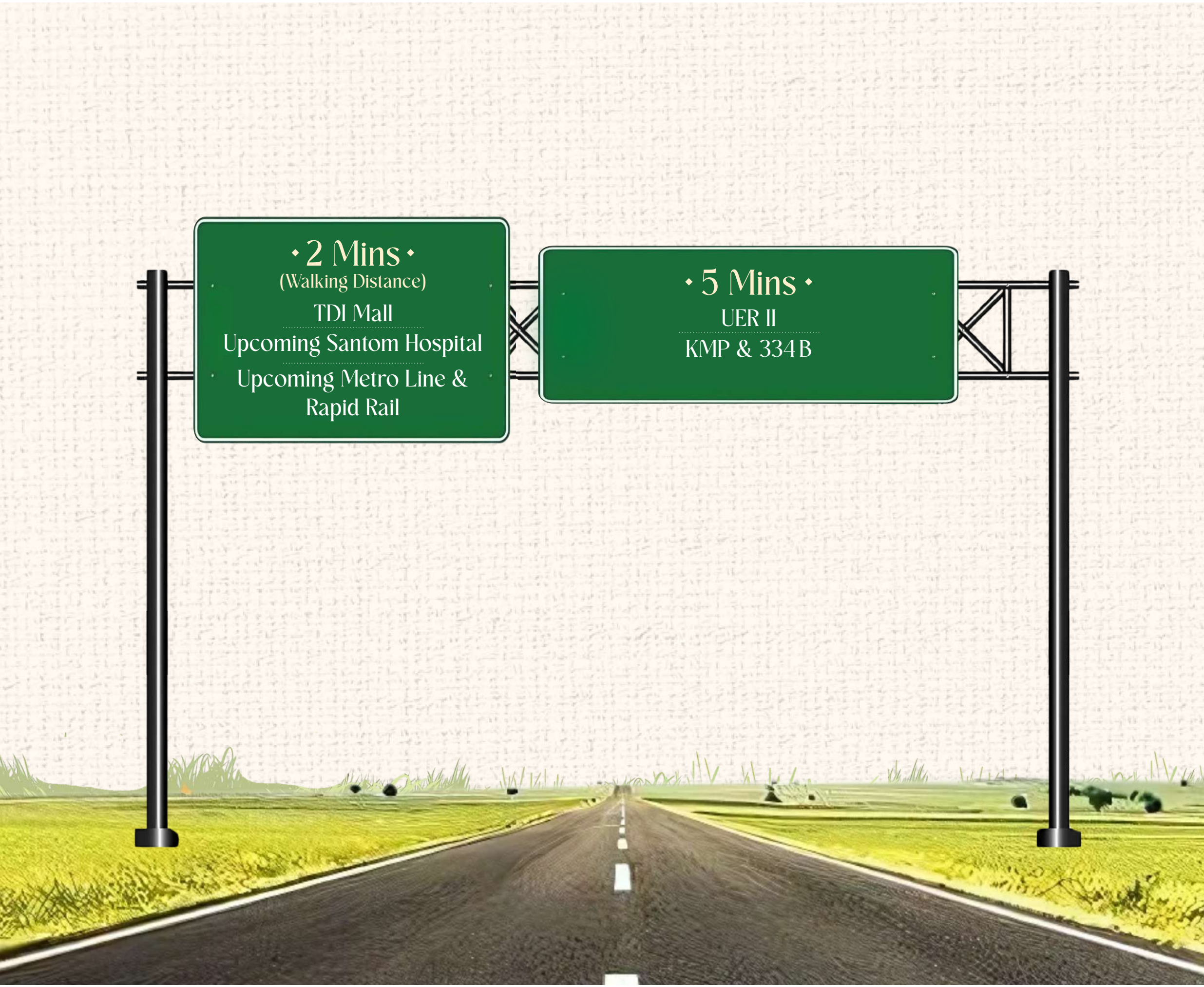




An Address THAT BALANCES

Accessibility | Advantage | Aspiration







◆◆— 10 Mins

SRM University

NIFTEM

Ramada by Wyndham Sonipat

Ashoka University

◆◆— 20 Mins

Max Hospital

15 Mins—◆◆

OP Jindal Global University

Rajiv Gandhi Education City

Murthal Dhaba

Sarovar Portico Sonipat

Jurasik Park

Govt. Hospital, Sonipat



Corporate Office: Unit No. 501, 5th Floor, Plot No. A-7, Aggarwal
Corporate Heights, Netaji Subhash Place, Pitampura, New Delhi-110034
Site Address: NH -1 (GT Road), Kundli, Haryana
Contact: +91-98182 38800 | info@vibsinfrabuild.com